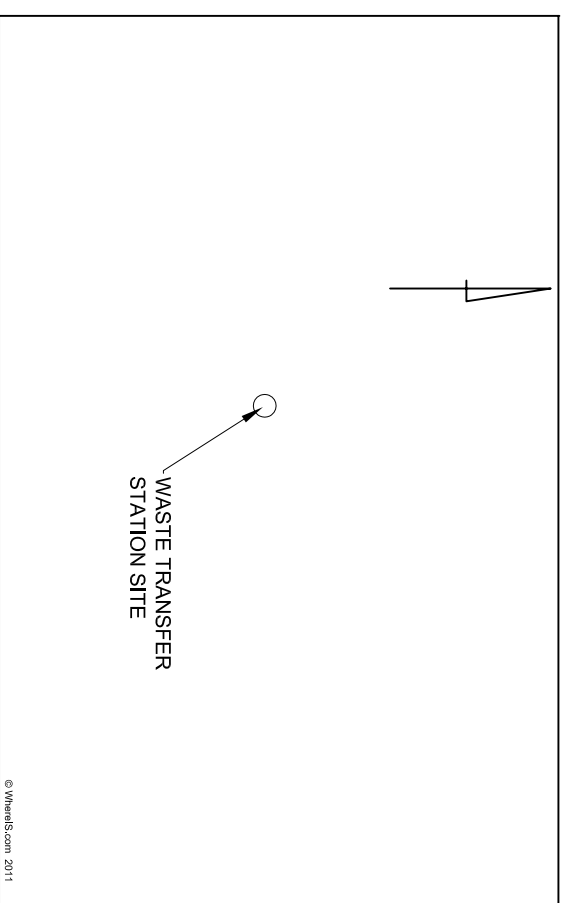


PALERANG COUNCIL

MACS REEF WASTE TRANSFER STATION

LOCALITY PLAN



SHEET INDEX

- 1 COVER SHEET
- 2 DESIGN NOTES
- 3 SITE PLAN
- 4 SITE ENTRY INTERSECTION DETAILS
- 5 TRANSFER STATION LAYOUT PLAN
- 6 ACCESS ROAD LONGITUDINAL SECTION & SECTION AA
- 7 BIN BAY LAYOUT & WALL DETAILS
- 8 BIN BAY ROOF DETAILS
- 9 BUY BACK CENTER BUILDING & AMENITIES BUILDING
- 10 STORAGE BAYS
- 11 INTERSECTION OF MACS REEF ROAD SITE PLAN
- 12 INTERSECTION OF MACS REEF ROAD DETAIL PLAN
- 13 TURNING PATH MODELING
- 14 EROSION & SEDIMENTATION CONTROL

Ver A	28/01/0101	M. Skinn	Entrance Roundabout Added
Ver O	14/01/2010	M. Skinn	For Council Review
Issue:	Date:	Released by:	Reason for Issue:

COPYRIGHT

Copyright in these drawings & the data presented by them is the property of Quadro Australia & may only be used or reproduced in whole or part in accordance with the associated terms of commission

QUADRO AUSTRALIA Pty Ltd
Phone: 02 4982 1691
Email: office@quadroaus.com
Fax: 02 4982 1691

Plan No: DA
Project Ref: 110013

**NOT FOR
CONSTRUCTION**

DESIGN NOTES

GENERAL

- G1 These drawings shall be read in conjunction with the Development Application and its supporting documentation.
- G2 These drawings are not to be scaled, refer to given dimensions only.
- G3 Requests for any additional dimensions or clarification of discrepancies shall be referred to the Engineer.
- G4 All dimensions are in metres unless otherwise noted.
- G5 All Services shall be physically located and marked prior to the start of works.

DESIGN PARAMETERS

- D1 The design is based on the Concept Design for Site 3 within the Concept Options Report for Macs Reef Waste Transfer Station prepared for Palerang Council by Quadro Australia Pty Ltd (February 2010).
- D2 The base survey was provided by Palerang Council.
- D3 The survey datum is assumed and is based on a survey mark on the south western corner of the intersection of Macs Reef Road and the unnamed public road (see Sheet 3). The survey mark was assigned a Reduced Level of 100.000.
- D4 The survey co-ordinates system is assumed and is based on a survey mark on the south western corner of the intersection of Macs Reef Road and the unnamed public road (see Sheet 3). The survey mark was allocated the co-ordinates X = 10,000,000 Y = 5,000,000.

DESIGN PAVEMENT MATERIALS

- P1 Macs Reef Road.
 Pavement type = Flexible pavement (Nom. 300mm)
 Pavement surface = 2 coat seal
 Shoulder = Unsealed
- P2 Unnamed Road
 Pavement type = Flexible pavement (Nom. 250mm)
 Pavement surface = 2 coat seal
- P3 Site Access Roads
 Pavement type = Flexible pavement (Nom. 250mm)
 Pavement surface = 2 coat seal
- P4 Bin Bays
 Pavement type = Rigid pavement (Nom. 150mm & variable)
 Pavement material = Reinforced concrete
- P5 Maneuvering Areas
 Pavement type = Flexible pavement (Nom. 250mm)
 Pavement surface = 2 coat seal

- P6 The design of the flexible pavements is to be undertaken by a Geotechnical Engineer following soil sampling on site.
- P7 The design of the rigid pavement is to be undertaken by a Structural Engineer following soil sampling on site.

STORMWATER

- S1 To avoid the excessive generation of leachate surface water controls are to be implemented.
- S2 Surface water controls are to be constructed to divert stormwater around the Waste Transfer Station.
- S3 Exposed or cleared areas should be minimised at all times.
- S4 Catch drains to have a minimum longitudinal grade of 1%.
- S5 Sedimentation control measures should be implemented as detailed on Sheets 14 and as recommended in Landcom's Soils and Construction, Volume 1, 4th Edition, March 2004.

LEACHATE POND

- LSP1 The leachate pond has been sized on design information provided by Council which has been calculated on the basis of containing a 1 in 25 year 24 hour duration storm event.
- LSP2 The design catchment area of the waste transfer station is 6200 sq.m. (see catchment boundary on Sheet 4). Based on the information provided by Council the waste transfer station will require a pond capacity of 683 cu.m.excluding freeboard.
- LSP3 The design plans provide for a minimum design pond volume of 696 cu.m excluding 0.5m freeboard

NOT FOR
CONSTRUCTION

Phone: 02 4982 1691
Email: office@quadroaus.com
Fax: 02 4982 1691



COPYRIGHT
Copyright in these drawings & the data presented by them is the property of Quadro Australia & may only be used or reproduced in whole or part in accordance with the associated terms of commission

Issue Date: 28/01/2011
Plan/Issue: DAVer A
Ratio: 1:1500
Sheet Size: A3
Project Reference: 110013
Approved for Issue: M Skinn
Datum: Assumed
Bench: GDA94, Geoid Dip Local GDA Eng

**MACS REEF WASTE TRANSFER STATION
DEVELOPMENT APPLICATION
SITE PLAN**

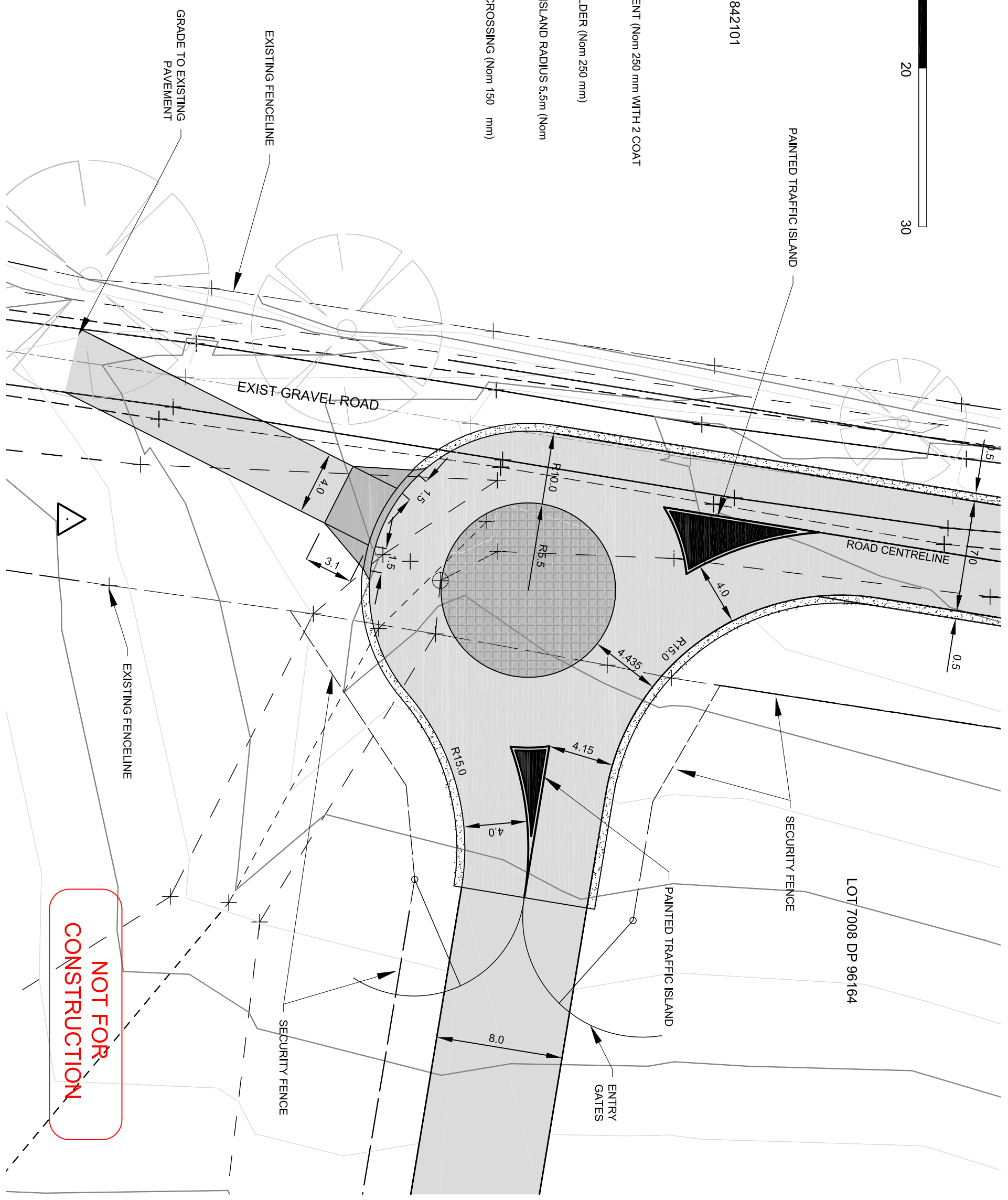
Sheet 3 of 14



**NOT FOR
CONSTRUCTION**



- LEGEND**
- CONSTRUCT NEW PAVEMENT (Nom 250 mm WITH 2 COAT SEAL)
 - CONSTRUCT ROAD SHOULDER (Nom 250 mm)
 - CONSTRUCT CONCRETE ISLAND RADIUS 5.5m (Nom 150mm)
 - CONSTRUCT CONCRETE CROSSING (Nom 150 mm)



NOT FOR CONSTRUCTION

Phone: 02 4982 1691
 Email: office@quadroaus.com
 Fax: 02 4982 1691






COPYRIGHT
 Copyright in these drawings & the data presented by them is the property of Quadro Australia & may only be used or reproduced in whole or part in accordance with the associated terms of commission

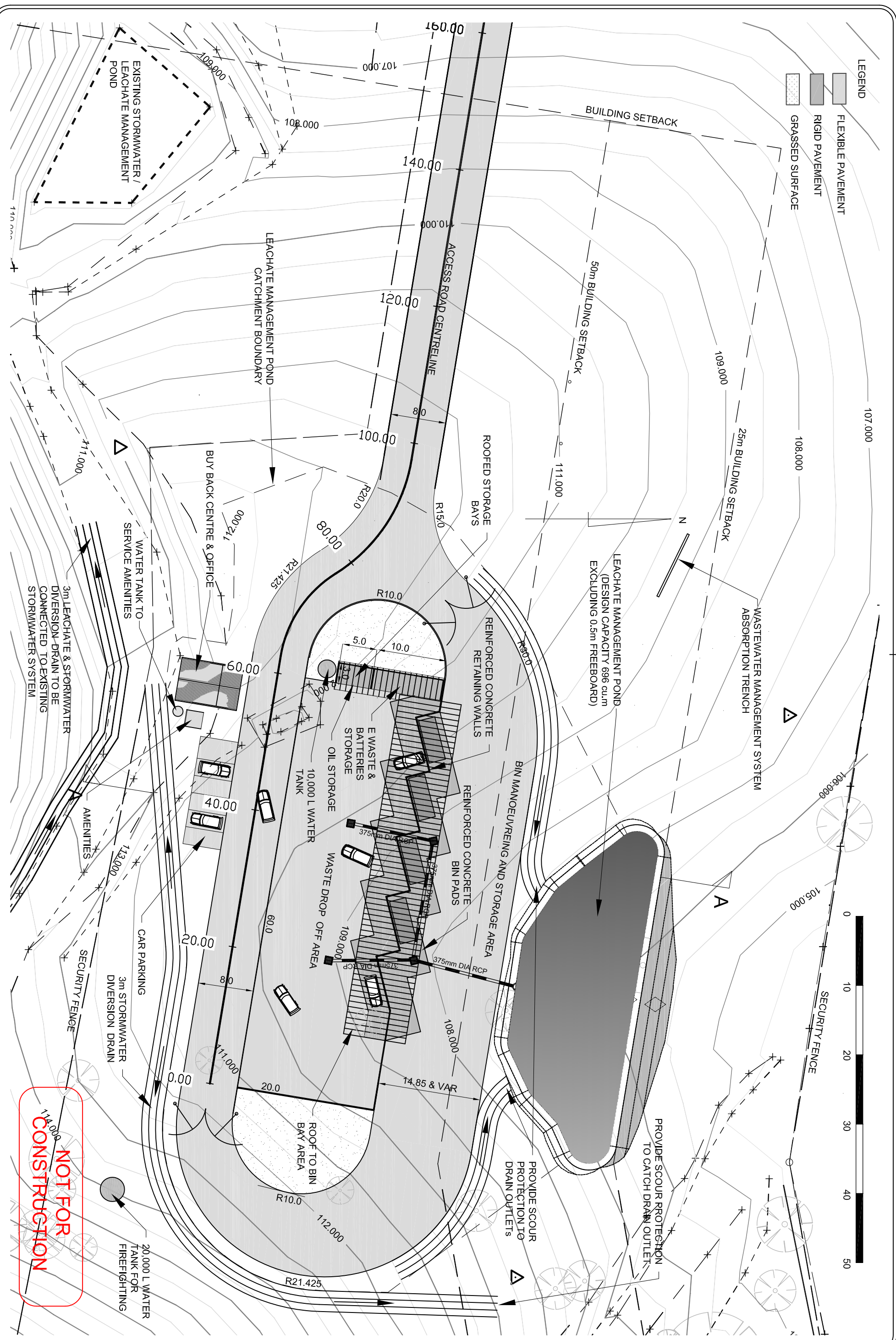
Issue Date: 28/01/2011
 Plan/Issue: DAVer A

Ratio: 1:250
 Sheet Size: A3
 Project Reference: 110013
 Approved for Issue: M Skinn
 Datum: Assumed
 Bench: Ground level (low) Eng

MACS REEF WASTE TRANSFER STATION DEVELOPMENT APPLICATION SITE ENTRY INTERSECTION DETAILS

Sheet 4 of 14

- LEGEND
-  FLEXIBLE PAVEMENT
 -  RIGID PAVEMENT
 -  GRASSED SURFACE



NOT FOR CONSTRUCTION

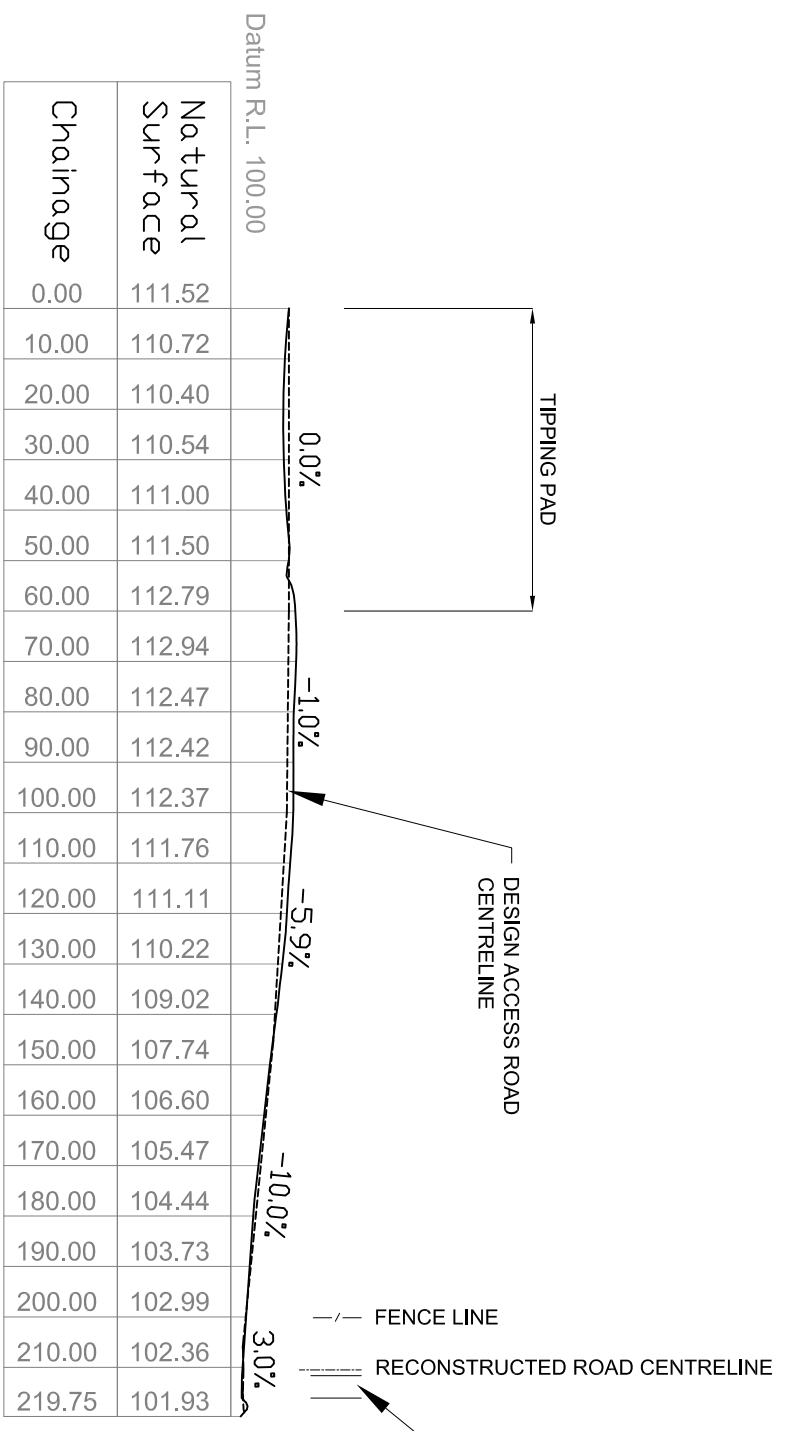
Phone: 02 4982 1691
 Email: office@quadroaus.com
 Fax: 02 4982 1691



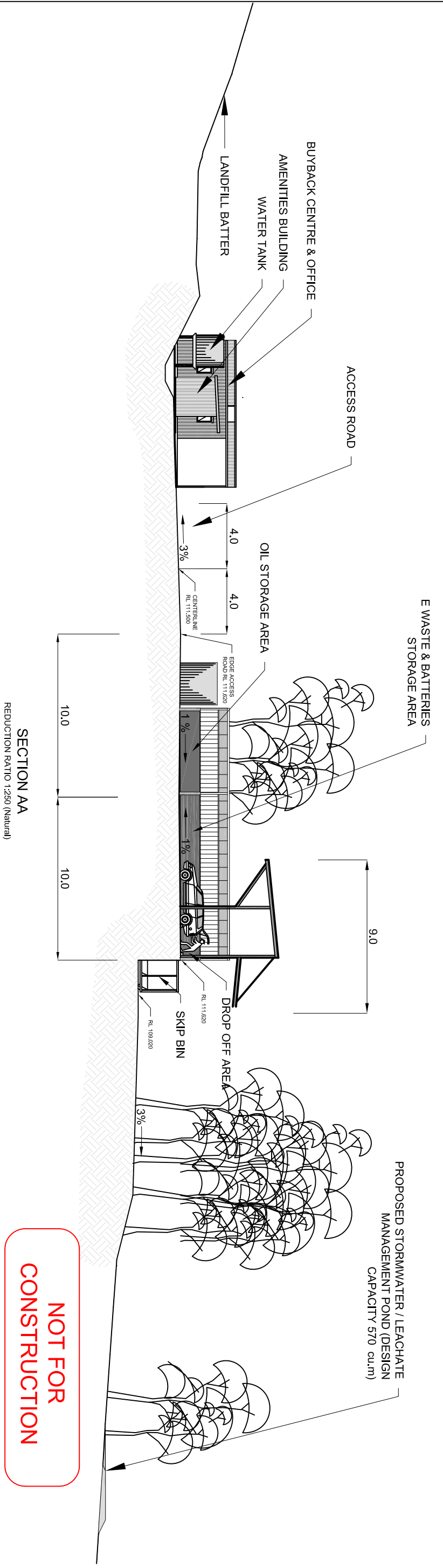
COPYRIGHT
 Copyright in these drawings & the data presented by them is the property of Quadro Australia & may only be used or reproduced in whole or part in accordance with the associated terms of commission

Issue Date: 28/01/2011
 Plan/Issue: DAWer A
 Ratio: 1:500
 Sheet Size: A3
 Project Reference: 110013
 Approved for Issue: M Skinn
 Datum: Assumed

MACS REEF WASTE TRANSFER STATION DEVELOPMENT APPLICATION TRANSFER STATION LAYOUT PLAN



ACCESS ROAD LONGITUDINAL SECTION
REDUCTION RATIO 1:1500 (Natural)



NOT FOR CONSTRUCTION

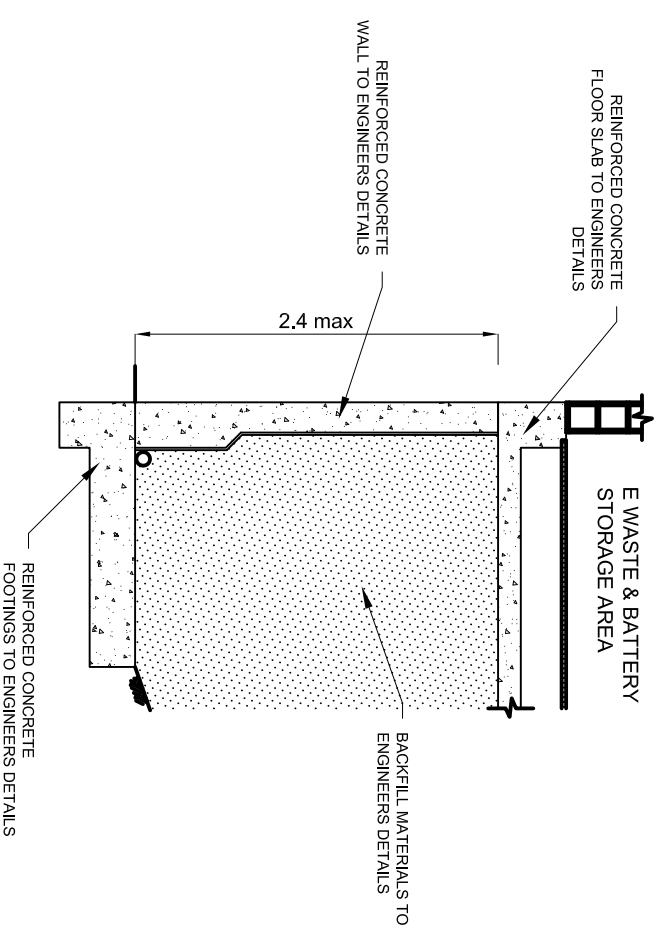
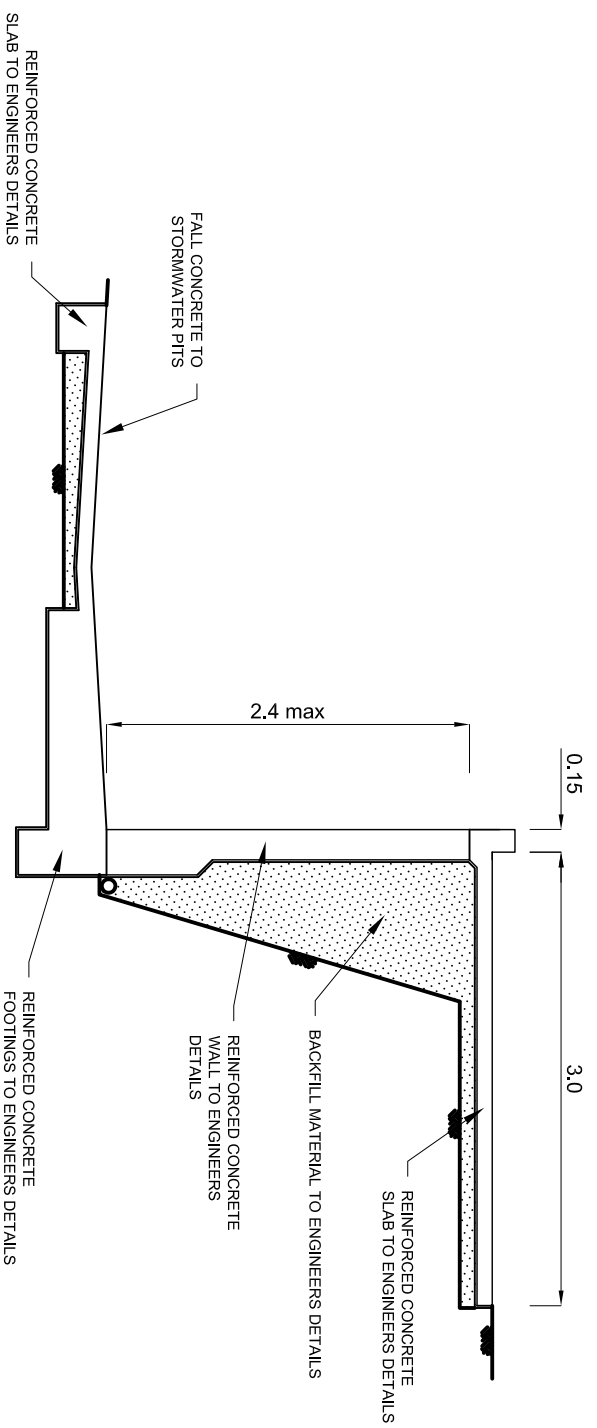
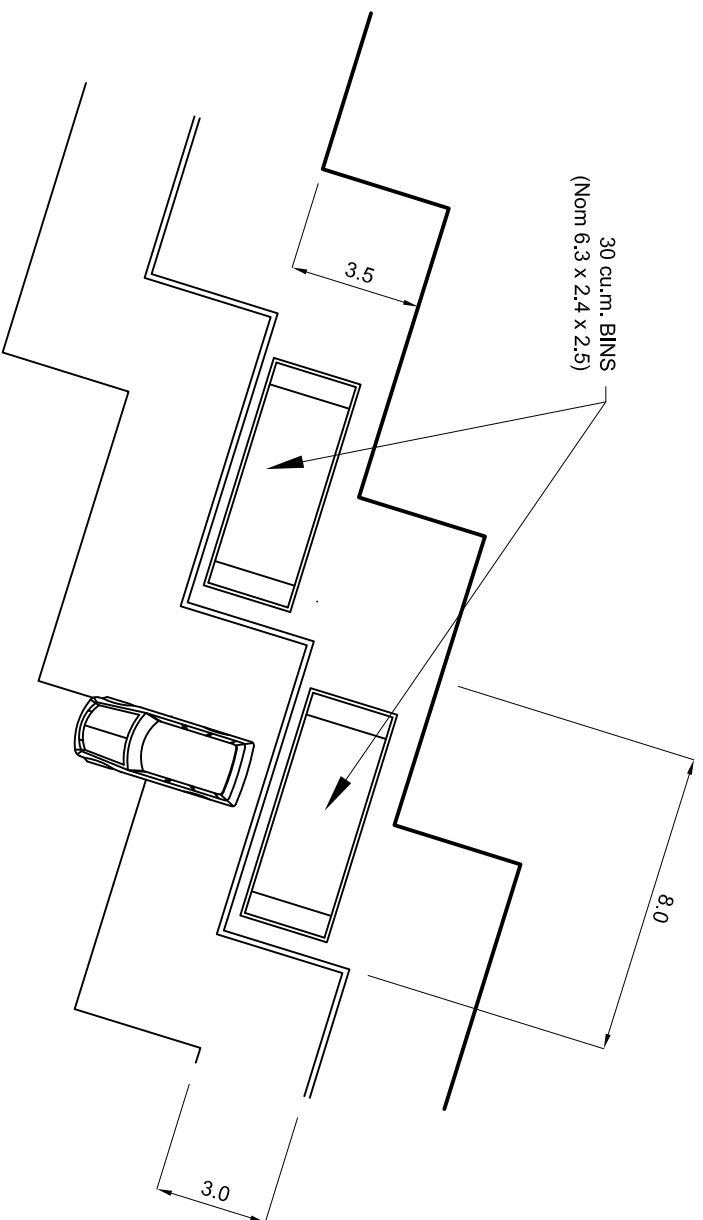
Phone: 02 4982 1691
Email: office@quadroaus.com
Fax: 02 4982 1691



COPYRIGHT
Copyright in these drawings & the data presented by them is the property of Quadro Australia & may only be used or reproduced in whole or part in accordance with the associated terms of commission

Issue Date: 28/01/2011
Plan/Issue: DAWer A
Ratio: As Shown
Sheet Size: A3
Project Reference: 110013
Approved for Issue: M Skinn
Datum: Assumed
BEC/Title: Civil Design/Draw/Eng

MACS REEF WASTE TRANSFER STATION
DEVELOPMENT APPLICATION
ACCESS ROAD LONGITUDINAL SECTION &
SECTION AA



THESE DRAWINGS ARE FOR GENERAL DIMENSIONS ONLY
REFER TO ENGINEERS DETAILS FOR CONSTRUCTION

**NOT FOR
CONSTRUCTION**

Phone: 02 4982 1691
Email: office@quadroaus.com
Fax: 02 4982 1691



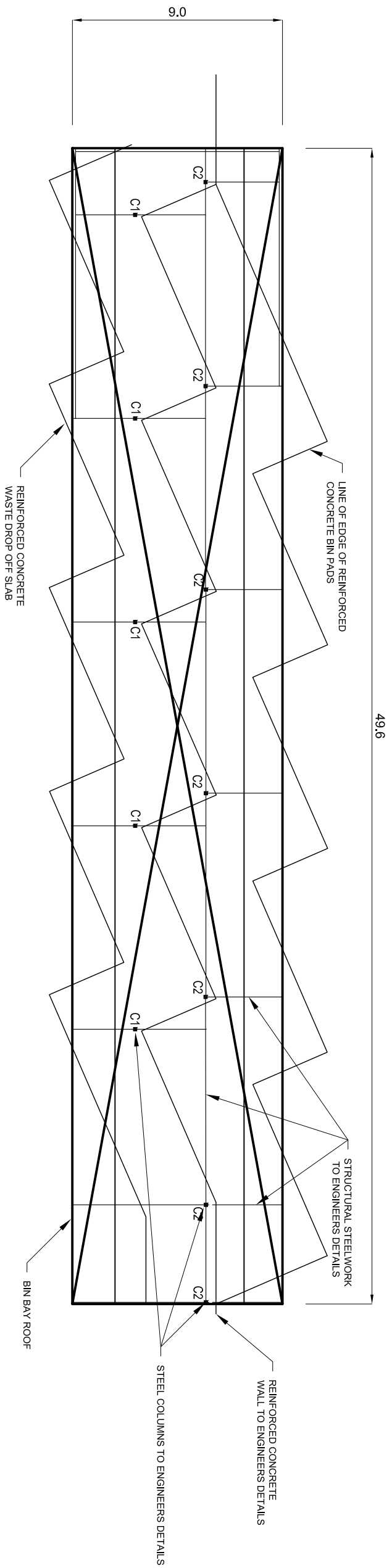
COPYRIGHT
Copyright in these drawings & the data presented by them is the property of Quadro Australia & may only be used or reproduced in whole or part in accordance with the associated terms of commission

Issue Date: 28/01/2011
Plan/Issue: DAVer A

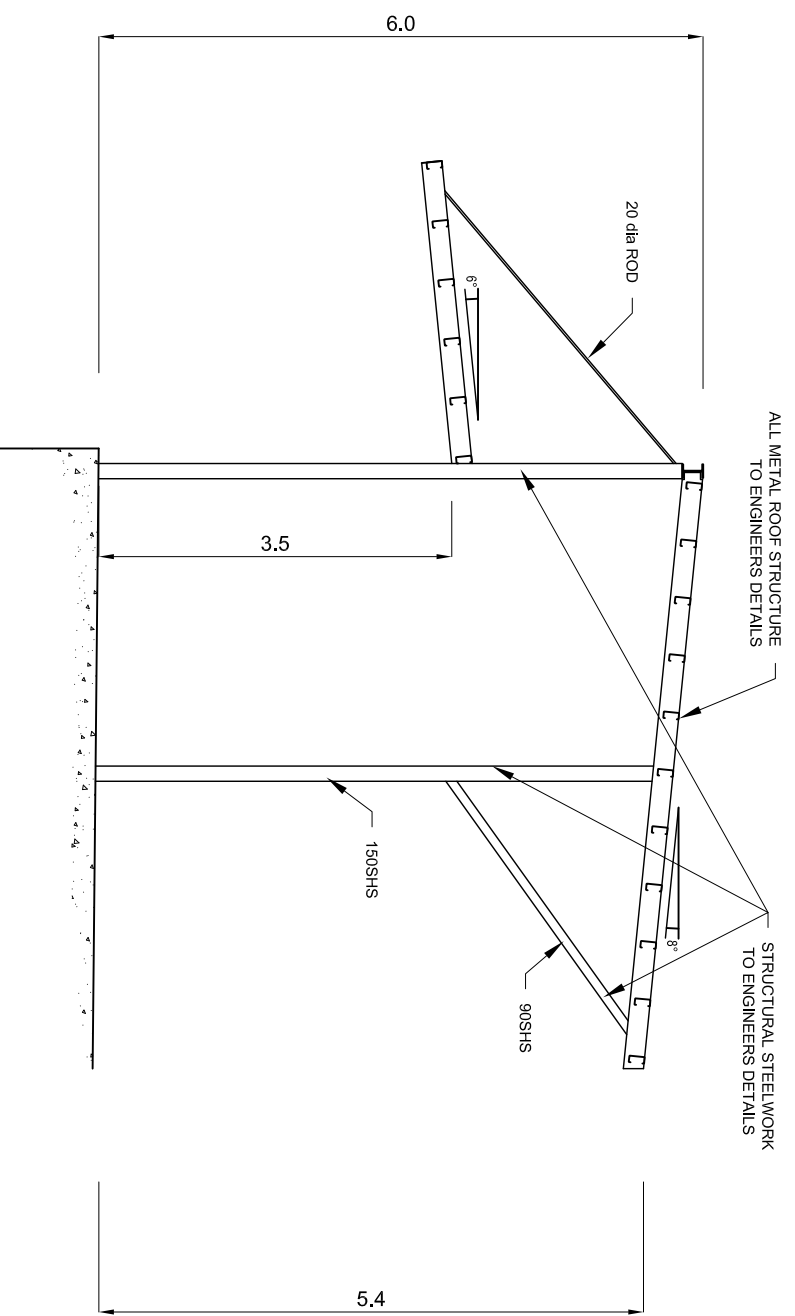
Ratio: As Shown
Sheet Size: A3
Project Reference: 110013
Approved for Issue: M Skinn
Datum: Assumed
Bentfield, Great Dip Road, Eng

**MACS REEF WASTE TRANSFER STATION
DEVELOPMENT APPLICATION
BIN BAY LAYOUT & WALL DETAILS**

Sheet 7 of 14



BIN BAY ROOF LAYOUT
REDUCTION RATIO 1:200



BIN BAY ROOF FRAME DETAILS
REDUCTION RATIO 1:75

THESE DRAWINGS ARE FOR GENERAL DIMENSIONS ONLY
REFER TO ENGINEERS DETAILS FOR CONSTRUCTION

**NOT FOR
CONSTRUCTION**

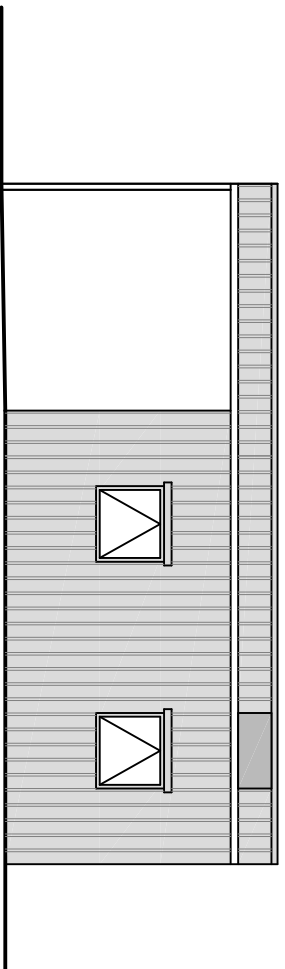
Phone: 02 4982 1691
Email: office@quadroaus.com
Fax: 02 4982 1691



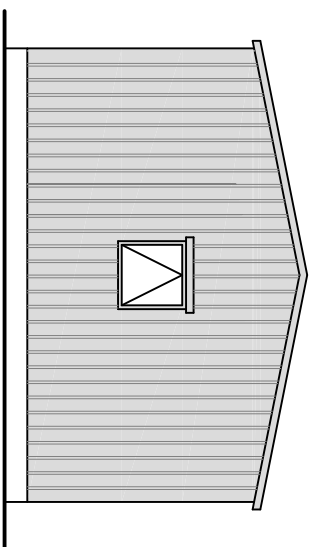
COPYRIGHT
Copyright in these drawings & the data presented by them is the property of Quadro Australia & may only be used or reproduced in whole or part in accordance with the associated terms of commission

Issue Date: 28/01/2011
Plan/Issue: DAVer A
Ratio: As Shown
Sheet Size: A3
Project Reference: 110013
Approved for Issue: M Skinn
Datum: Assumed
BEC/Chill, Grad Dip Local Gov Eng

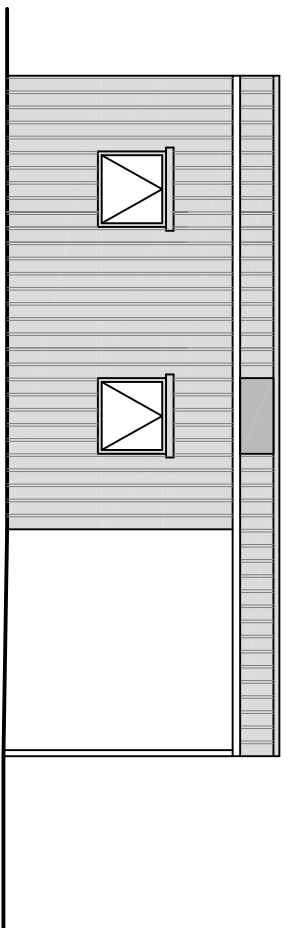
**MACS REEF WASTE TRANSFER STATION
DEVELOPMENT APPLICATION
BIN BAY ROOF DETAILS**



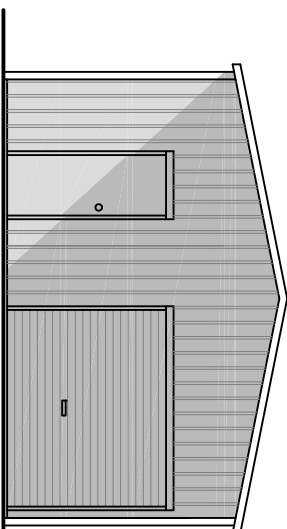
WESTERN ELEVATION



SOUTHERN ELEVATION



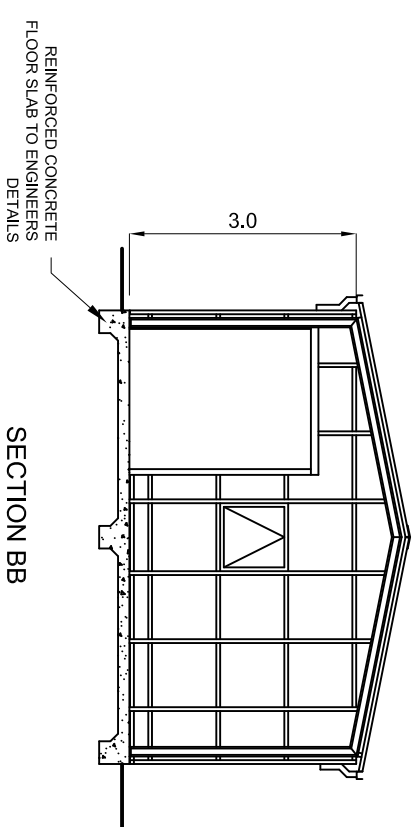
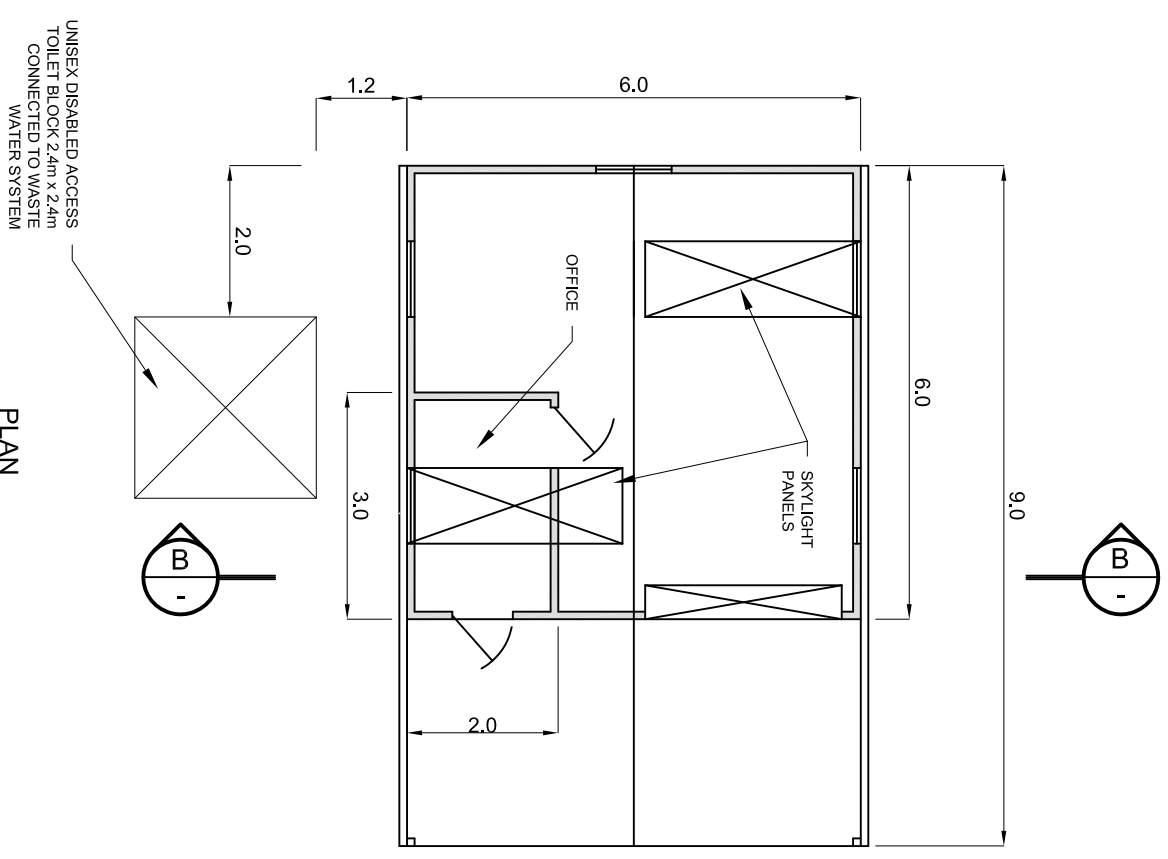
EASTERN ELEVATION



NORTHERN ELEVATION

ALL METAL SHED STRUCTURE TO MANUFACTURER'S SPECIFICATION

THESE DRAWINGS ARE FOR GENERAL DIMENSIONS ONLY
REFER TO ENGINEERS DETAILS FOR CONSTRUCTION



**NOT FOR
CONSTRUCTION**

Phone: 02 4982 1691
Email: office@quadroaus.com
Fax: 02 4982 1691



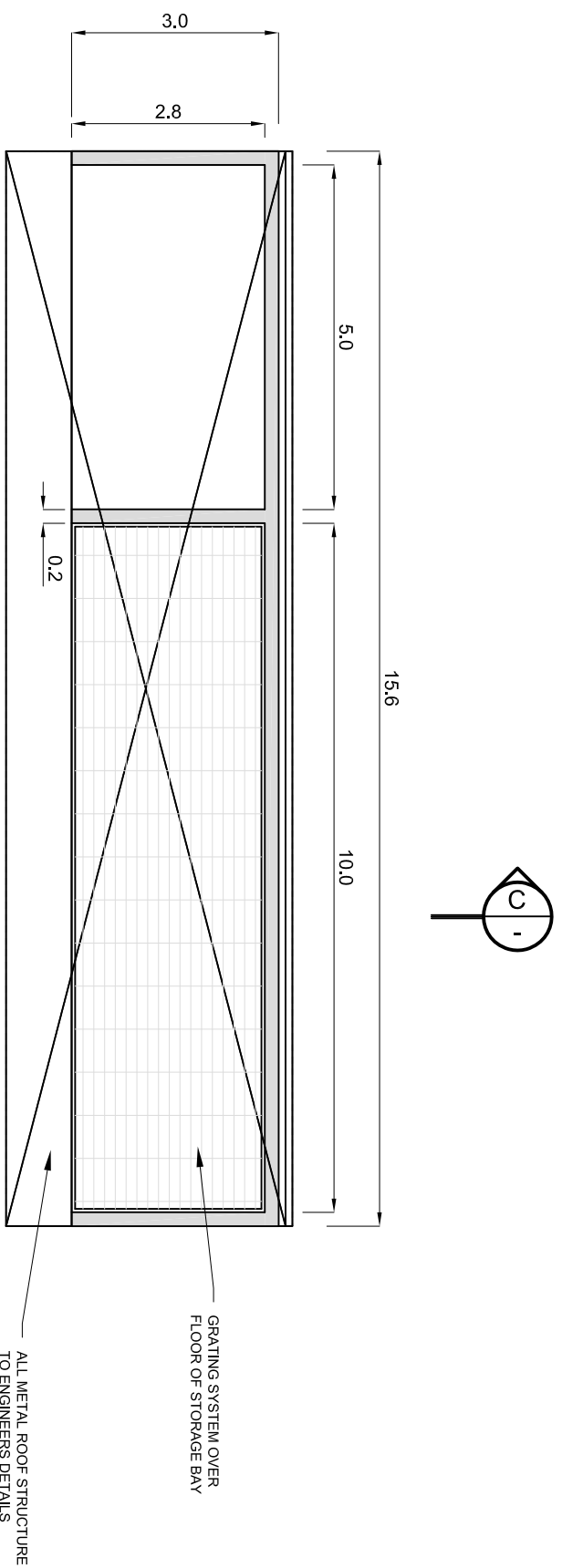
COPYRIGHT
Copyright in these drawings & the data
presented by them is the property of
Quadro Australia & may only be used or
reproduced in whole or part in accordance
with the associated terms of commission

Issue Date
28/01/2011
Plan/Issue
DAVer A

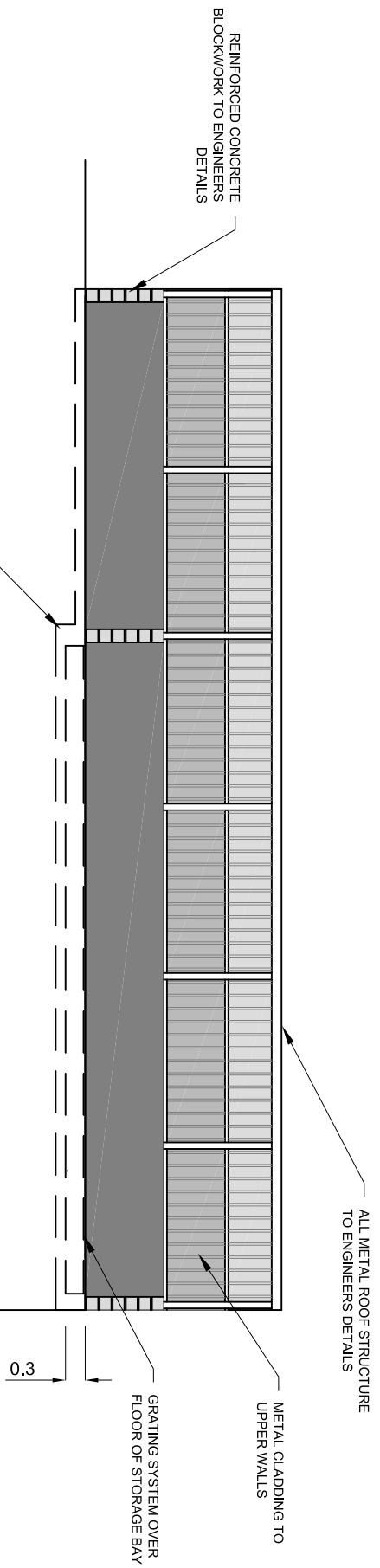
Ratio: 1:100
Sheet Size: A3
Project Reference: 110013
Approved for Issue: M Skinn
BEC/Chill, Grad Dip Local Gov Eng

MACS REEF WASTE TRANSFER STATION
DEVELOPMENT APPLICATION
BUYBACK CENTRE WITH OFFICE
AND AMENITIES BUILDINGS

Sheet
9
of
14

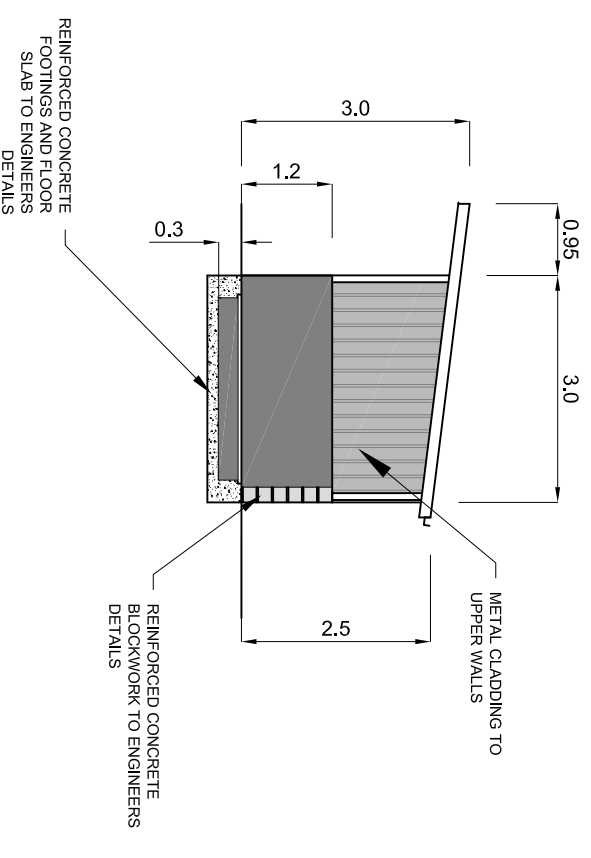


PLAN



FRONT ELEVATION

THESE DRAWINGS ARE FOR GENERAL DIMENSIONS ONLY
REFER TO ENGINEERS DETAILS FOR CONSTRUCTION



SECTION CC

NOT FOR CONSTRUCTION

Phone: 02 4982 1691
Email: office@quadroaus.com
Fax: 02 4982 1691



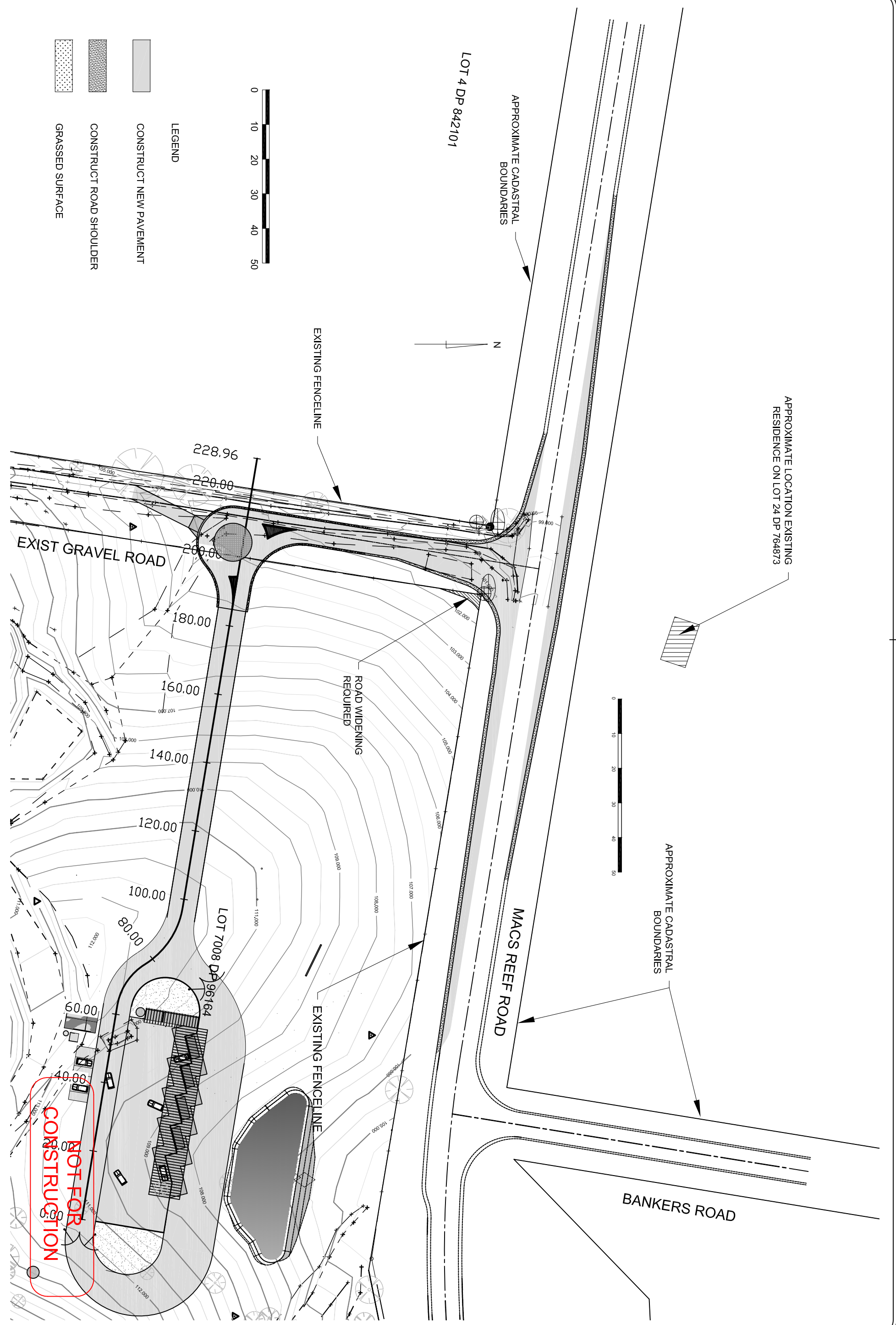
COPYRIGHT
Copyright in these drawings & the data presented by them is the property of Quadro Australia & may only be used or reproduced in whole or part in accordance with the associated terms of commission

Issue Date
28/01/2011
Plan/Issue
DAVer A

Ratio: 1:100
Sheet Size: A3
Project Reference: 110013
Approved for Issue: M Skinn
Datum: Assumed
BEC/Arch/ Civil/Dep Local Gov/Eng

**MACS REEF WASTE TRANSFER STATION
DEVELOPMENT APPLICATION
STORAGE BAYS**

Sheet
10
of
14



Phone: 02 4982 1691
 Email: office@quadroaus.com
 Fax: 02 4982 1691



COPYRIGHT
 Copyright in these drawings & the data presented by them is the property of Quadro Australia & may only be used or reproduced in whole or part in accordance with the associated terms of commission

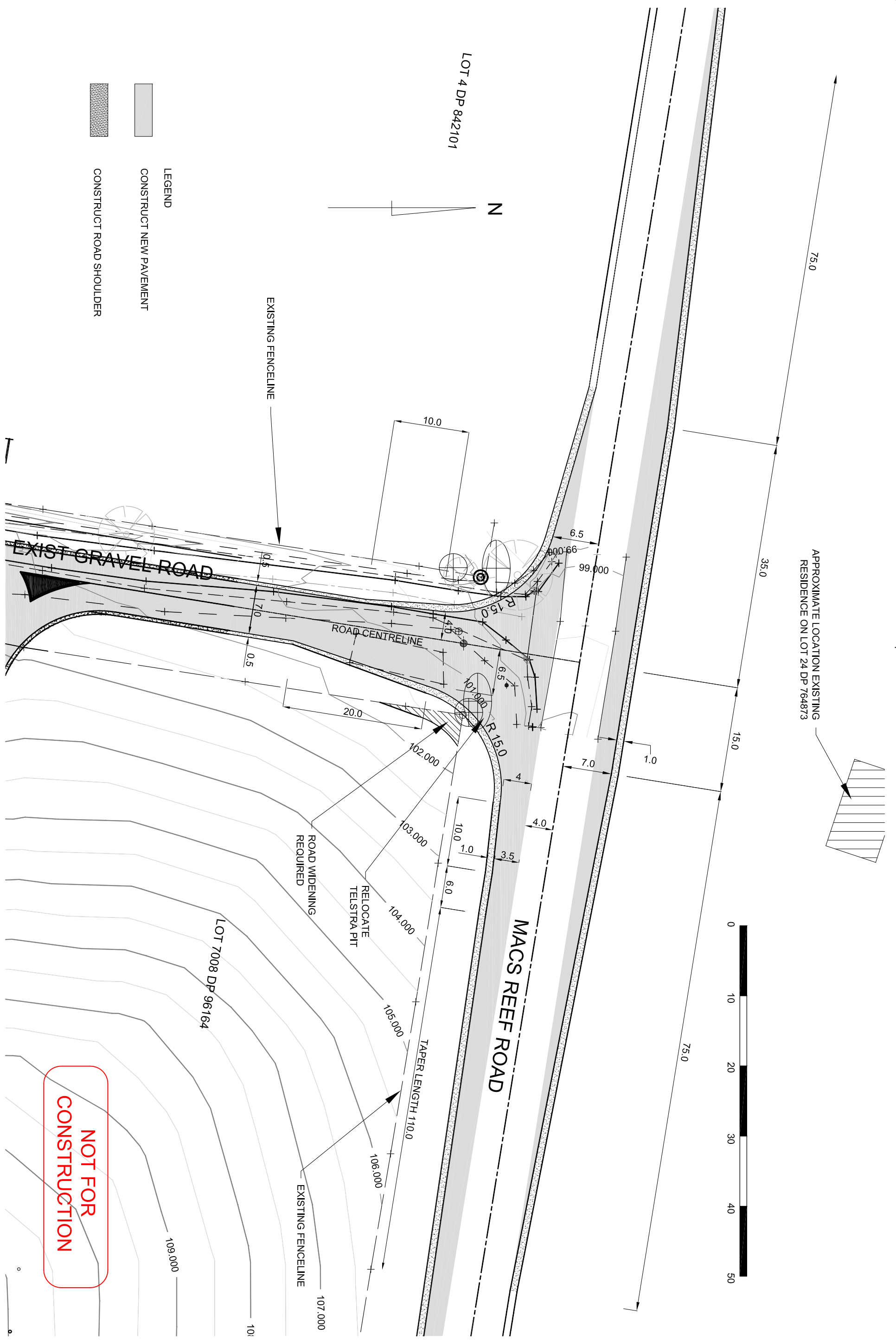
Issue Date: 28/01/2011
 Plan/Issue: DAWer A
 Ratio: 1:1000
 Sheet Size: A3
 Project Reference: 110013
 Approved for Issue: M Skinn
 Datum: Assumed
 BEchtlich, Great Dip Local Gov Eng

MACS REEF WASTE TRANSFER STATION DEVELOPMENT APPLICATION
MACS REEF ROAD INTERSECTION
SITE PLAN

Phone: 02 4982 1691
Email: office@quadroaus.com
Fax: 02 4982 1691



- LEGEND
- CONSTRUCT NEW PAVEMENT
 - CONSTRUCT ROAD SHOULDER



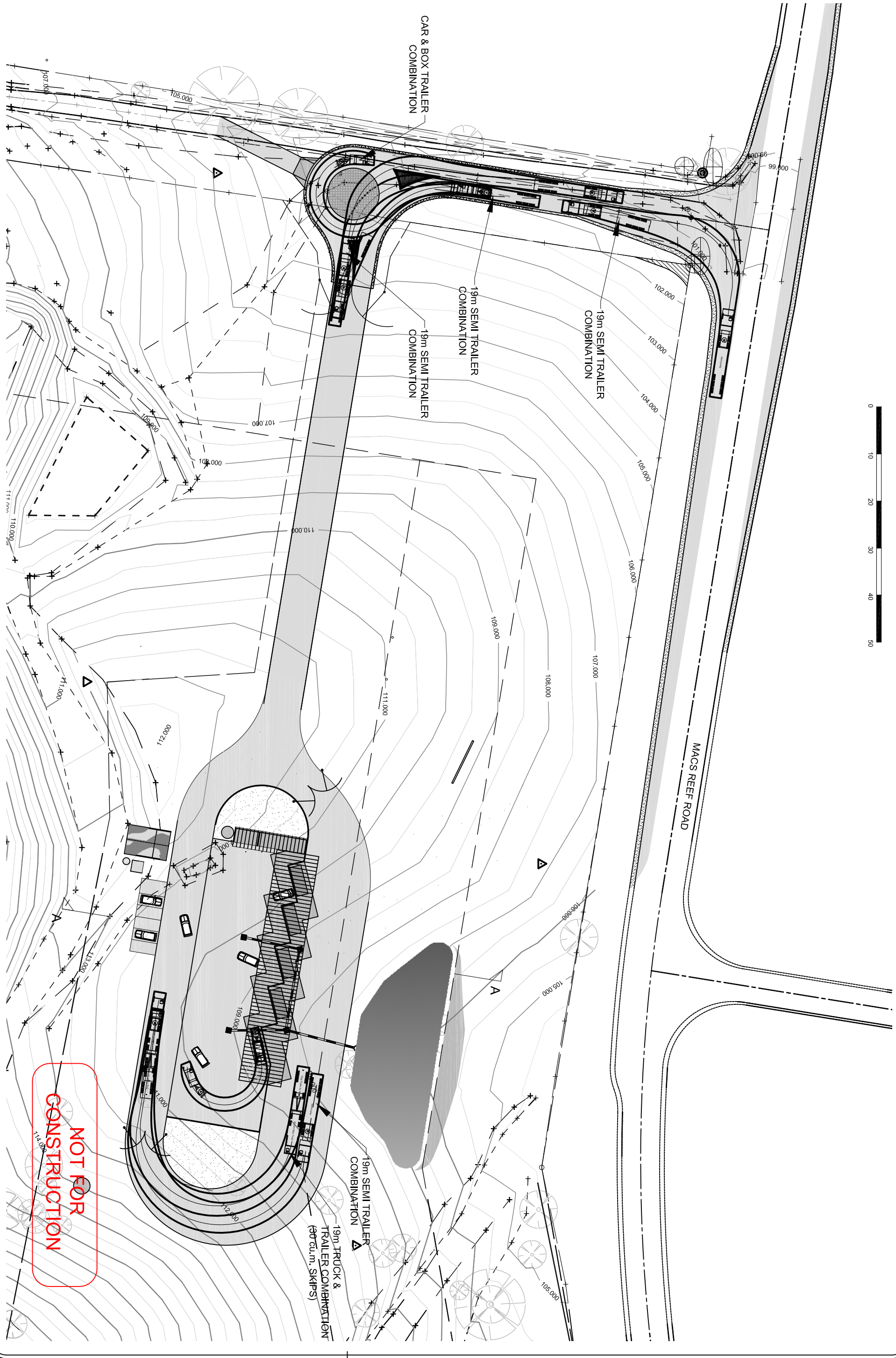
COPYRIGHT
Copyright in these drawings & the data presented by them is the property of Quadro Australia & may only be used or reproduced in whole or part in accordance with the associated terms of commission

Issue Date
28/01/2011
Plan/Issue
DAVer A

Ratio: 1:500
Sheet Size: A3
Project Reference: 110013
Approved for Issue: M Skinn
Datum: Assumed
Bench: GDA94, Geoid Dp Local Gov Eng

**MACS REEF WASTE TRANSFER STATION
DEVELOPMENT APPLICATION
MACS REEF ROAD INTERSECTION
INTERSECTION DETAILS**

Sheet
12
of
14



Phone: 02 4982 1691
Email: office@quadroaus.com
Fax: 02 4982 1691



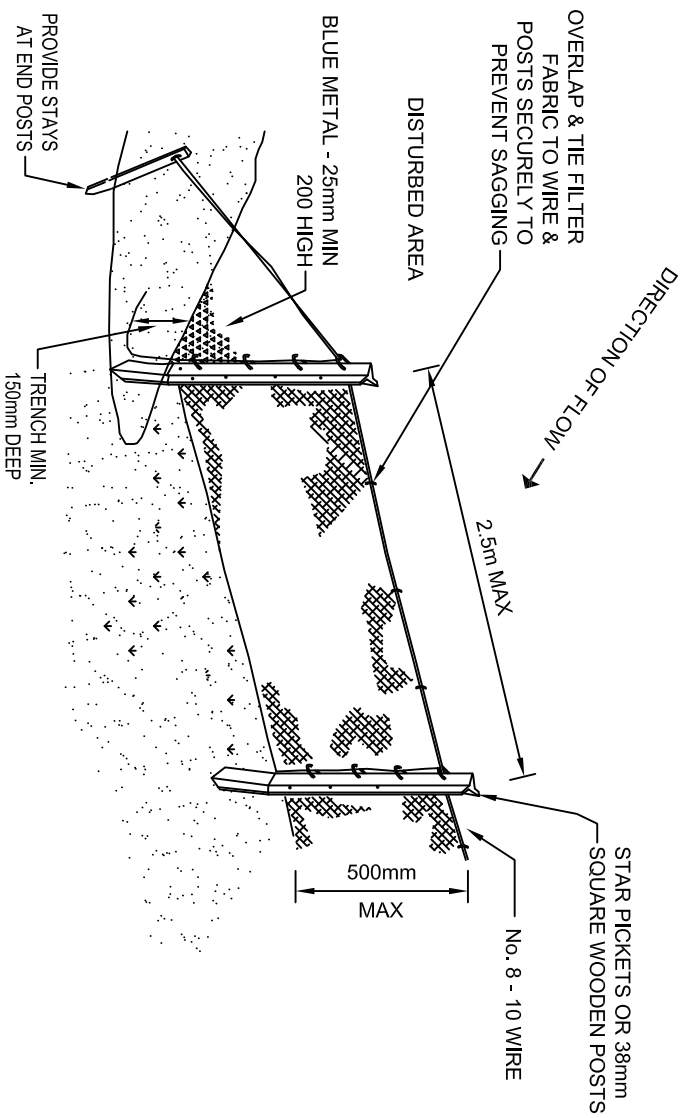
COPYRIGHT
Copyright in these drawings & the data presented by them is the property of Quadro Australia & may only be used or reproduced in whole or part in accordance with the associated terms of commission

Issue Date
28/01/2011
Plan/Issue
DAVer A

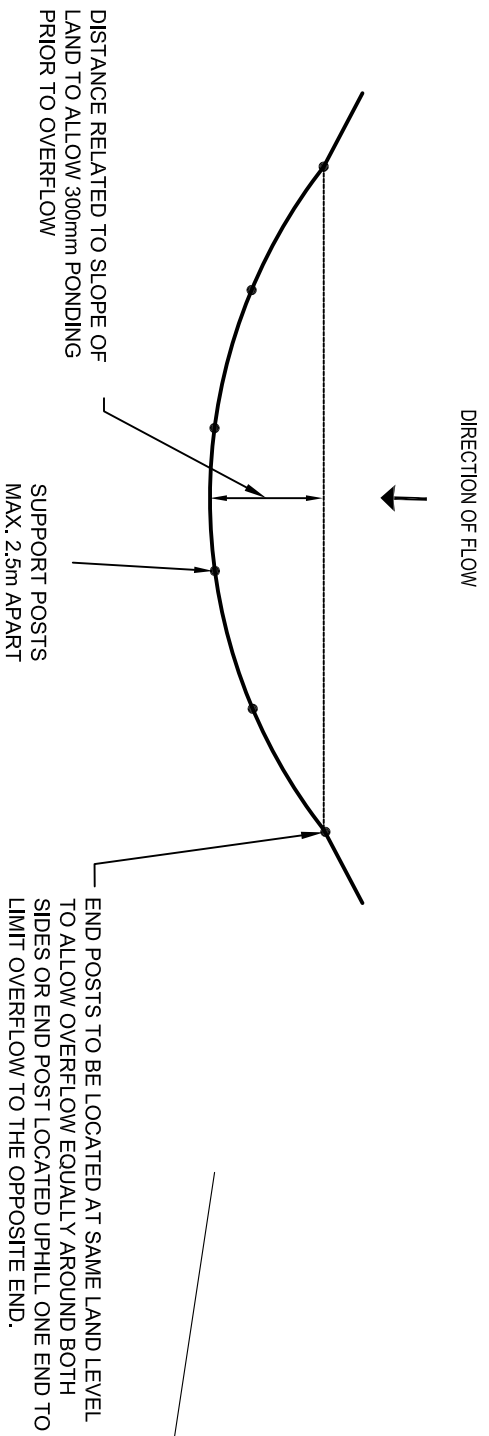
Ratio: 1:750
Sheet Size: A3
Project Reference: 110013
Approved for Issue: M Skinn
Datum: Assumed
Elevation: Great Dip Local Gov Eng

MACS REEF WASTE TRANSFER STATION
DEVELOPMENT APPLICATION
TURNING PATH MODELLING

Sheet
13
of
14



TYPICAL DETAILS
SILT FENCE BELOW DISTURBED GROUND
(NTS)



TYPICAL DETAILS
SILT FENCE CONFIGURATION FOR DRAINS
(NTS)



SEDIMENTATION AND EROSION CONTROL PLAN
(NTS)

LEGEND
Sediment Fence
Silt fence across drain

NOT FOR CONSTRUCTION

Phone: 02 4982 1691
Email: office@quadroaus.com
Fax: 02 4982 1691



COPYRIGHT
Copyright in these drawings & the data presented by them is the property of Quadro Australia & may only be used or reproduced in whole or part in accordance with the associated terms of commission

Issue Date
28/01/2011
Plan/Issue
DAVer A

Ratio: NA
Sheet Size: A3
Project Reference: 110013
Approved for Issue: M Skinn
Datum: Assumed
Bench: Geoid (Sea Level) (Low Eng)

MACS REEF WASTE TRANSFER STATION
DEVELOPMENT APPLICATION
EROSION & SEDIMENTATION CONTROL

Sheet
14
of
14